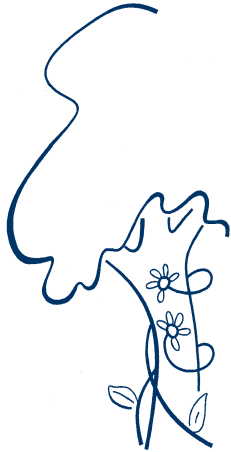


ARBORETUM UPDATE



*"If winter comes can
spring be far behind?"*

—Percy Bysshe Shelley

Featured Inside

Headline News	1
February Calendar	2
Hot On The Trail	3
Volunteer Spotlight	4

GIVING TREE DEDICATION RECOGNIZES ARBORETUM LEAD-

On Monday, December 20, 2004, volunteers and members of Friends of Boone County Arboretum gathered at the Ellis House to "unwrap" the new Friends of Boone County Arboretum Giving Tree.

The evening's open house included a slide show highlighting activities and events at Boone County Arboretum in 2004 as well as a brief presentation honoring lifetime members and honorary volunteers. Dick Ammon, Bob Maurer, Susan Schultz, and Bill and Jane Smith became the first names engraved upon the leaves of the "Giving Tree" in honor of their generous support, hard work and dedication to Friends of Boone County Arboretum.



The Friends of Boone County Arboretum "Giving Tree" recognizes individuals who have made an outstanding contribution to the organization and its efforts to promote the Boone County Arboretum.



Dick Ammon, a founding member of Boone County Arboretum and life-time member of Friends of Boone County Arboretum, proudly places his name on the "Giving Tree" during the dedication ceremony.

As an organization housed at the Ellis House and staffed through the Boone County Cooperative Extension Service, Friends of Boone County Arboretum was granted permission from Boone County Cooperative Extension Service District Board to utilize the Wall Tree at the Ellis House as the "Giving Tree."

volunteers, community leaders, local businesses, and lifetime members of Friends of Boone County Arboretum, who have donated a distinguishable amount of time and/or money to Boone County Arboretum and its continued growth and success.



Jane Smith, Susan Schultz, and Bob Maurer—true Friends of Boone County Arboretum—are recognized on the "Giving Tree" for their hard work, dedication, and generosity in 2004.



Friends of Boone County Arboretum

February 2005

SUN	MON	TUE	WED	THU	FRI	SAT
		1	2	3	4	5
			Spring Fling Speaker/Demo Committee 9AM to 10AM	Kenton Co. Mstr. Gardener Class begins 1PM to 5PM		
6	7	8	9	10	11	12
				Tri-State Green Industry Expo 7AM to 4PM		
13	14	15	16	17	18	19
			Spring Fling Committee Planning Mtg. 6:30 to 8:30PM	Raised Beds & Container Gardens Class 9AM to 11AM		
20	21	22	23	24	25	26
		Planting for Continuous Bloom Class 7PM to 9PM	Children's Garden Committee Mtg. 7:00 to 8:30PM		Commercial Pesticide Training 9AM to 3PM	
27	28					
	Friends General Meeting 6:30 to 8PM					

SCHEDULE OF CLASSES & EVENTS

- **2/2 Spring Fling Speakers Committee Mtg:** 9AM to 10AM, Boone Co. Extension Office. All members interested in volunteering for Spring Fling Demonstration/ Speaker Committee are asked to attend.
- **2/3 Kenton County Master Gardener Class Begins:** 1PM to 5PM, every Thurs. through May 12th. at Kenton Co. Extension Office. Registration fee is \$125.00. For more information contact Kassy Jarboe at 859-356-3155.
- **2/10 2005 Tri-State Green Industry Expo:** 7AM to 4PM, NKY Convention Center. \$70 on-site fee. Trade show & class topics cover: annuals & perennials; greenhouse mgmt; tree and shrub care; turf mgmt.
- **2/16 Spring Fling 2005 Committee Planning Mtg.:** 6:30PM to 8:30PM, Boone Co. Ext. Office. Chairpersons should bring an outline of budget and volunteer needs. Refreshments provided.
- **2/17 Raised Beds and Container Gardening Class:** 9AM to 11AM, Boone Co. Ext. Office. Free. Please call 859-586-6101 to register.
- **2/22 Planting For Continuous Bloom in Your Landscape:** 7PM to 9PM, Boone Co. Ext. Office. Free. Please call 859-586-6101 to register.
- **2/23 Children's Garden Meeting.:** 7PM, Boone Co. Ext. Office. Topic: Planning 2005 Spring Fling Children's Garden Events.
- **2/25 Commercial Pesticide Applicator Training:** 9AM-3PM, Boone Co. Ext. Office.
- **2/28 Friends of Boone Co. Arboretum General Business Meeting:** 6:30PM to 8PM, Boone Co. Ext. Office. Spring Fling is coming! Please attend to find out how you can participate. New members welcome. Refreshments provided.



HOT ON THE TRAIL

'Tis The Season For Evergreens, Berries, and Bark

Winter. While some people consider it their least favorite season, many Friends and nature enthusiasts are learning more about the subtle gifts that Mother Nature bestows upon us this time of year, to curb our appetite for beautiful, outdoor sights and sounds. Evergreen trees and holly berries highlight the trail this season. The opportunity to closely examine the bark of the many different trees at the arboretum is another reason to visit Boone County Arboretum this winter season. Why not give yourself the experience of an invigorating, brisk, winter morning walk along the arboretum trail? It may just give you a whole new outlook on winter...



Weeping Alaska Cypress
'Pendula': 4660, 4690, 4710.



Giant Arborvitae : 5600,
5680, 5690, 5700, 5770.



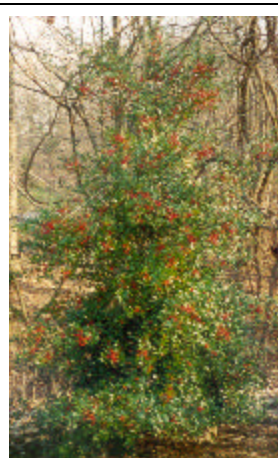
Needle
Juniper:
4810, 4820,
4830, 6195,
6365;
Bed 144-R16;
Bed 145-R17.

It is in winter that trees reveal what they most truly are—alien presences possessed of a stark and foreign beauty that owes little to the human race."

—Allen Lacy

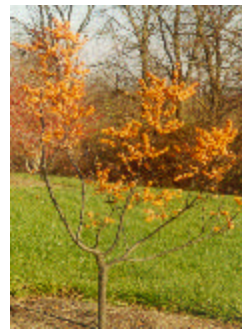


Winter Red Winterberry Holly : 2060,
2070, 2080, 2090; Bed 185-013



Foster Holly : 0265, 0271,
0272; Bed 3-N19

Aurantiaca
Winterberry
Holly:
3610,
3615



Paperbark Maple :
2860, 2870, 2880;
Bed 119-H2, H3



Fat
Albert
Colorado
Blue
Spruce :
2100

* Numbers correspond to a tree's location on the arboretum maps available at any of the three kiosks along the arboretum walking trail.



**Friends of
Boone County
Arboretum**

P.O. Box 876
Burlington, KY 41005

Phone: (859) 586-6101
Fax: (859) 586-6107
Email: cheryl.coles@uky.edu

Visit our website at
www.bcarboretum.org



P.O. Box 876
Burlington, KY 41005

Volunteer Spotlight

Friends Board Welcomes Newly Elected Chairpersons



Rick Bingham, newly elected Chairperson for Friends of Boone County Arboretum Board, enjoys gardening at the arboretum as well as at home.

At the November 2004 meeting of Friends of Boone County Arboretum, members elected the organization's new Board Officers for 2005. Rick Bingham was elected Board Chairperson and Joan Klahr was elected as Vice-Chairperson.

Rick has been a member of Friends since May 2003. He recently completed his class work for the NKY Master Gardener Program and is working on earning his volunteer hours required to graduate.

Joan has been an active member of Friends since the organization was founded in 2002. She is a certified Master Gardener and has taken leadership roles on numerous projects including the Children's Garden Committee, Membership Committee, and the Spring Fling Planning Committee.



Joan Klahr, newly elected vice-chairperson for Friends of Boone County Arboretum Board, is a teacher and enjoys working as a Garden Guide in The Children's Garden at the Boone County Arboretum.