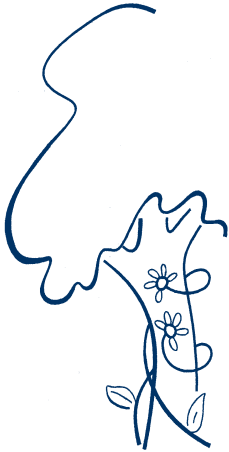


# ARBORETUM UPDATE



*“September tries its best to have us forget summer.”*

—Bern Williams

## Featured Inside

<b>Hot On The Trail</b>	2
<b>September Calendar</b>	3
<b>October Calendar</b>	4
<b>Children’s Garden</b>	5
<b>Volunteer Spotlight</b>	6

## A-MAZING THINGS TAKE SHAPE AT THE BOONE COUNTY ARBORETUM

The newest addition to the Children’s Garden at The Boone County Arboretum is almost complete thanks to the dedication and perspiration of volunteers— otherwise known as “Friends.”

Visitors to the Boone County Arboretum will soon be able to experience the Great Ornamental Grass Maze. Located next to the playground, The Grass Maze increases the amount of space where children can play and explore at the Arboretum.

Gwen Birthelmer, Chairperson of the Children’s Garden Committee, explained how the idea for the Grass Maze came about: “We wanted to give children the freedom to explore in a safe environment. After considering various types of plants, The Children’s Garden Committee decided on a maze constructed of ornamental grasses. We thought it would be a unique way to showcase ornamental



Volunteers and True Friends of The Arboretum—Audrey Ney, Gwen Birthelmer, Renee Guenther, Sharon Utz, Betty Kasprovicz, and Rick Bingham—bring shovels and smiles to the arboretum.

grasses to homeowners, who might be interested in planting them as well.

The native and exotic ornamental grasses chosen for the maze were selected based on their overall size, durability, and beauty. Some of the grasses planted in the maze are: Purple Moor grass, Side oats Grama grass, ‘Karly Rose’ Dwarf Fountain grass, ‘Little Kitten’ Maiden grass, ‘The Blues’ Little Bluestem grass, ‘Dallas Blue’ Switchgrass, Giant Fountain grass, and ‘Graziella’ Maiden grass.

The overall design of the maze involved constructing a gate allowing children to have direct access from the playground into the maze. With safety in mind, “view spaces” were added between the grasses so parents could look

into the area, while children in the maze would be able to see out.

Once inside the maze, children will be able to follow the paths leading to the center of the maze. The goal of the maze is to reach the hidden “pool,” where a mirror will be placed with a sign inviting visitors to, “look inside to see who has the power to protect the environment. The answer is you!”

Construction began in mid-August and is expected to be completed by Labor Day weekend. Although the ornamental grasses have been planted, the maze will need another growing season before it takes shape completely and the grasses exhibit their full beauty.



Gwen Birthelmer looks over her design plans before planting the ornamental grass maze.

# HOT ON THE TRAIL

## White Ash Tree Beckons The Change of Season

When visiting the Arboretum in September, be sure to stop by to see *Fraxinus americana*. You may know “him” (or “her”) better as the White Ash Tree and this time of year he is easy to find.

If you stop by one of the three kiosks along the Arboretum Trail at Central Park, you will find free maps with directions to each tree’s “address” along the path. The white ash trees reside at the following “addresses”:

**1982, 1983, 2534, 3262, and 5276**. (Notice the number on the map corresponds to the number on the large ground tag found under the tree, or the last 4 digits of the small “barcode” tag hanging from the tree.)

This time of year, the white ash greets visitors by showing its true colors. The autumn foliage of the ash is very beautiful, changing from a dark green to light lemon and then into a misted purple.

While visiting the white ash trees at the Arboretum, you must also stop to see *Fraxinus americana* ‘Autumn Purple’—a cultivar of the white ash tree. This tree has outstanding, deep, misted purple foliage. Autumn Purple White Ash resides at the following addresses along the arboretum trail: **1780, 1790, 3180, and 3190**.

*Fraxinus americana* is one of the fastest growing



Source: Eric Phillips, Kistler

Presently, a new exotic beetle from Asia, called the Emerald Ash Borer, is threatening the population of ash trees in southeastern Michigan and surrounding states. This is of great concern to homeowners, landscapers, and nurseries in Northern Kentucky, who are worried that it won’t take long for the emerald ash borer to find its way here. The emerald ash borer has already killed white ash, green ash, and black ash trees as well as several horticultural varieties of ash trees in Michigan and Ohio.

*“The true meaning of life is to plant trees, under whose shade you do not expect to sit.”*

—Nelson Henderson

deciduous trees in North America. The white ash tree grows in abundance around the Great Lakes and the St. Lawrence River valley and throughout Nova Scotia, New Brunswick, and Prince Edward Island. It is found all over the eastern United States as far south as northern Florida.

Historically, the ash tree has sustained people in many ways. Any person who has ever held a wooden tennis racket, baseball bat, or hockey stick; climbed a balance beam or wooden playground; worn snowshoes; or sat in a chair, owes homage to the ash tree. Remember to thank them when you stop in to see them at the arboretum.

*If you have a white ash tree or are considering planting a white ash, the following information may be of good use:*

### SPECIES SUMMARY

**Genus name:**

*Fraxinus*

**Species name:**

*americana*

**Common name:**

White Ash

**USDA Hardiness Zone:**

4 to 9

**Average mature height:**

65 ft.

**Maximum mature height:**

80 ft.

**Shade tolerance:**

Intermediate

**Fruit:**

samara

**Nitrogen Fixation?:**

no

# CHILDREN’S GARDEN OFFERS ENCHANTMENT FOR ALL AGES

**En-chant-ment:** *a magic spell or charm; the state of being under a spell; delightfulness.* Not many words can so accurately describe the sense of wonder that visitors experience when they walk through the gates of the Children’s Garden at the Boone County Arboretum.

Rick Bingham, volunteer and Friend of the Arboretum says, “Don’t let the name trick you. This garden is for everyone—children of all ages—to enjoy.”

Whether you are a day-care provider or parent looking for a fun, educational adventure for your children; a family enjoying time together outside; or a home gardener looking



The gates of the Children’s Garden are open to visitors of all ages.

for ideas for your garden, The Children’s Garden has something to offer.

The ABC Garden is a wonderful teaching tool for parents and teachers. Each letter of the alphabet is represented by a different flower or plant in this garden. From alyssum to zinnia, this “floral alphabet” allows children to use their imagination and senses while

learning their “A-B-C’s.”

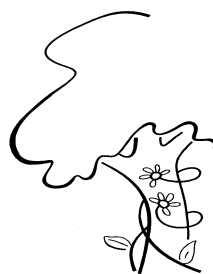
Maps of the Children’s Garden are available at the entrance gate and illustrate the numerous attractions and points of interest in the garden. Visitors of all ages have enjoyed smelling and touching the plants in the sensory raised beds, where the scents of pineapple sage, lemon thyme, and lavender fill the air on a late summer day.



The lookout bridge gives visitors an overview of the Children’s Garden.

Other fun, learning adventures in the Children’s Garden include: the Pollination Garden, the Native Plant Area, The Household Crop and Medicinal Plant Gardens, Animal Topiaries, and The Fairy Garden.

As the summer-time comes to a close, why not take a late summer adventure and see for yourself why the Children’s Garden is “a place to grow” for all ages?



Can you find any flowers or plants missing from the ABC Garden? Come visit the Children’ Garden to see if you can find them.



*It is our hope that touring and experiencing this garden will foster a sense of history and awe of our world, and it just may inspire a whole new generation to care for our environment.*

*“September: it was the most beautiful of words, he’d always felt, evoking orange-flowers, swallows, and regret.”*

—Alexander Theroux, 1940

**Friends of  
Boone County  
Arboretum**

P.O. Box 876  
Burlington, KY 41005

Phone: (859) 586-6101  
Fax: (859) 586-6107  
Email: cheryl.coles@uky.edu

Visit our website at  
[www.bcarboretum.org](http://www.bcarboretum.org)



P.O. Box 876  
Burlington, KY 41005

---

## FAIR BOOTH ATTRACTS NEW FRIENDS

There is truth to the saying that one can never have too many Friends.

This certainly was the case as twenty members and volunteers with Friends of The Arboretum signed up to meet and greet community residents at The Boone County Fair from August 9-14th.

At the fair, Friends of Boone County Arboretum welcomed 2 new Family Memberships; 2 new Individual Memberships; 7 new volunteers; and received \$230 in souvenir sales and donations.



**Lynn Gorz and Cheryl Coles meet and greet New 'Friends' at The Boone County Fair.**

Volunteer Coordinator, Cheryl Coles, was happy to see such a great response among volunteers as well as community residents wanting to learn more about the Arboretum. "It's wonderful to see people who love the Arboretum describe it to those who have not yet visited; our Friends of the Arboretum are truly the best adver-

tisement for going to visit the Arboretum," Coles says.

Presently, there are 152 combined volunteers and paid members that comprise Friends of Boone County Arboretum.

The Membership Committee for 'Friends' meets every fourth Monday of the month at 6PM at The Boone County Extension Service. Anyone interested in meeting new 'Friends' and sharing ideas for spreading the word about our Arboretum is encouraged to participate. Call 859-586-6101 for details.